

## ***PenMount DMC9000 For Windows 98/Me Software Installation***

This driver supports Windows 98/Me. PenMount Windows 98/Me driver detail contents are list as below:

***“SETUP.EXE”***

***“DMC9000.INF”***

***“DMC9000.VXD”***

To install the software to your computer, your computer system must have Windows 98/Me system running and installed PenMount Serial Interface control board such as 90A4, 9026B, 9036 or 9084 control board or has layout the DMC9000 IC already.

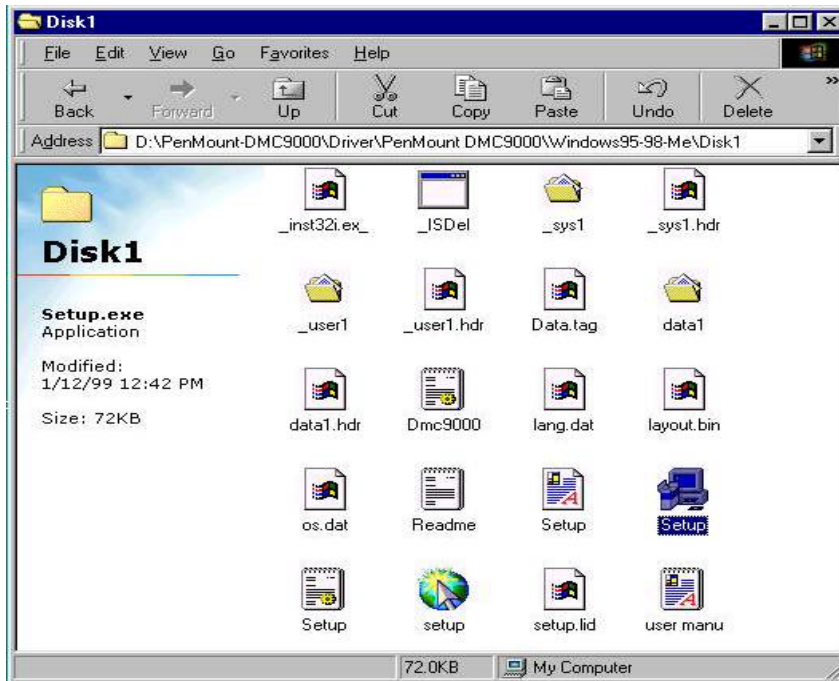
If you have an older version of PenMount Windows 98/Me driver installed in your system, please remove it first.

Follow up the steps below to install the PenMount Windows 98/Me driver.

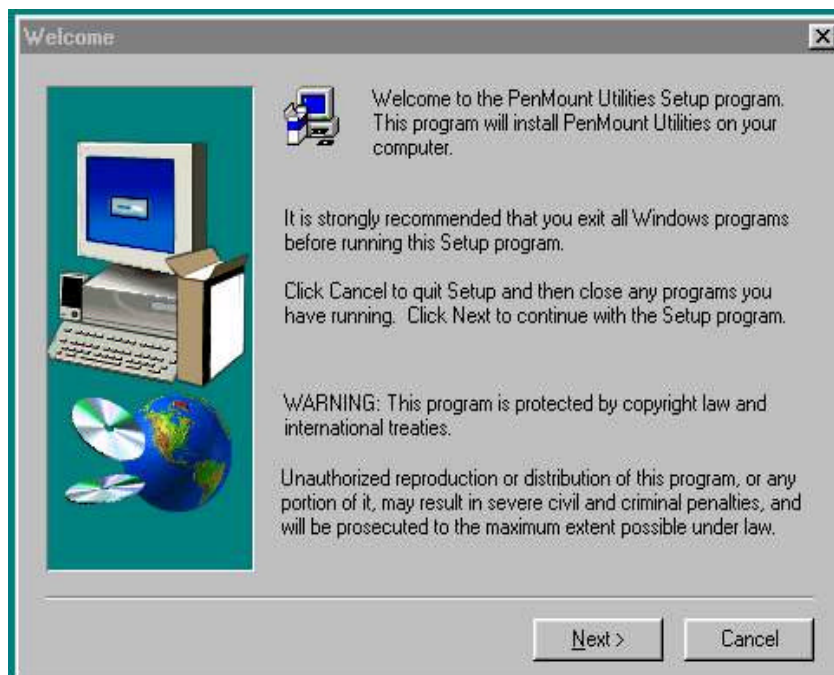
1. You will find out "Unknown Device" when start the system, please choose "Cancel



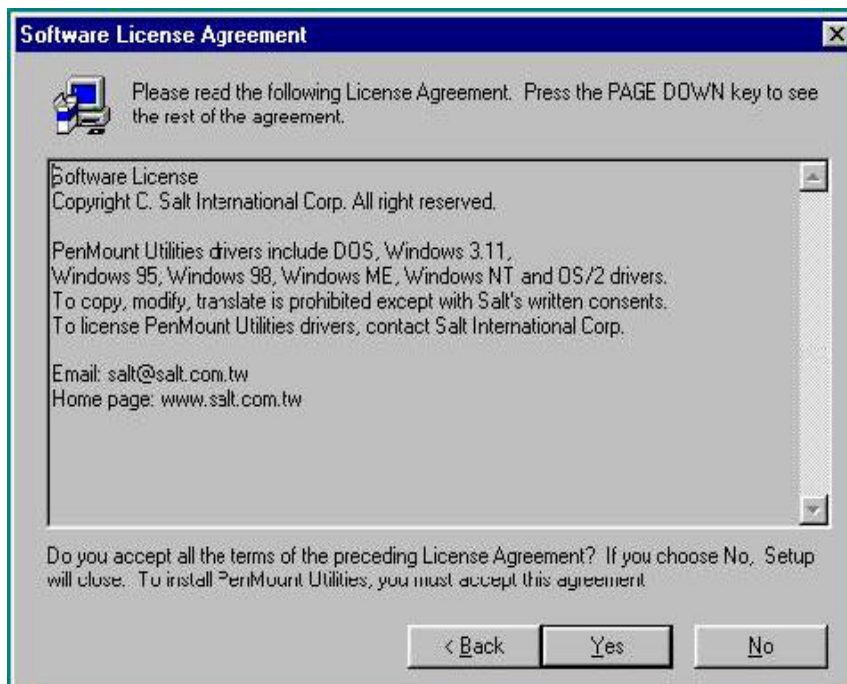
2. Select CD-ROM “PenMount DMC9000\Driver\PenMount DMC9000\Windows98-Me\Disk1” to install PenMount windows 98/Me driver to system



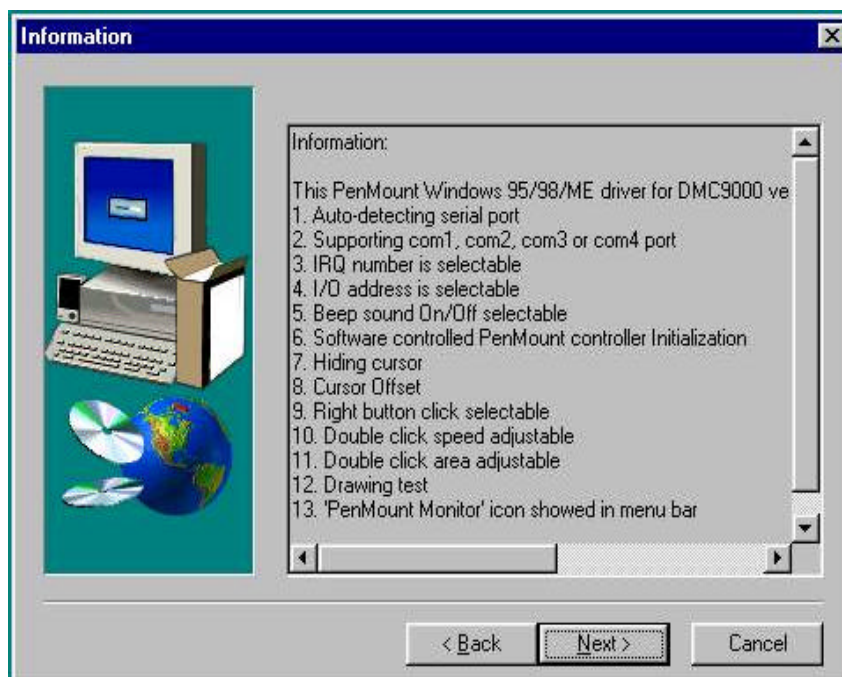
3. The screen displays PenMount logo, copying "installation wizard" and 'PenMount Utilities" screen plus "welcome" message appears. Select “Next”.



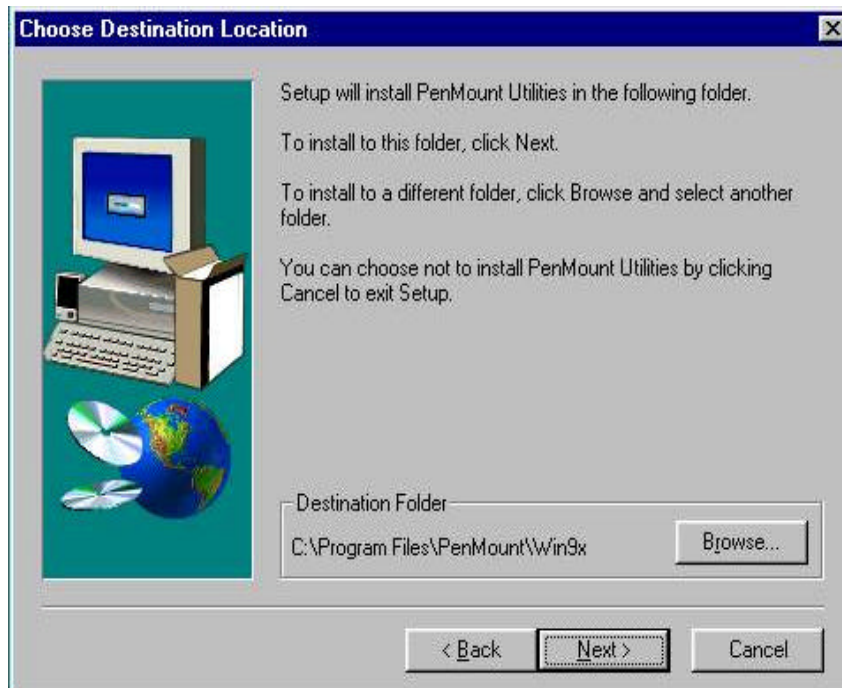
4. The next screens are "Software License Agreement", select "Yes" .



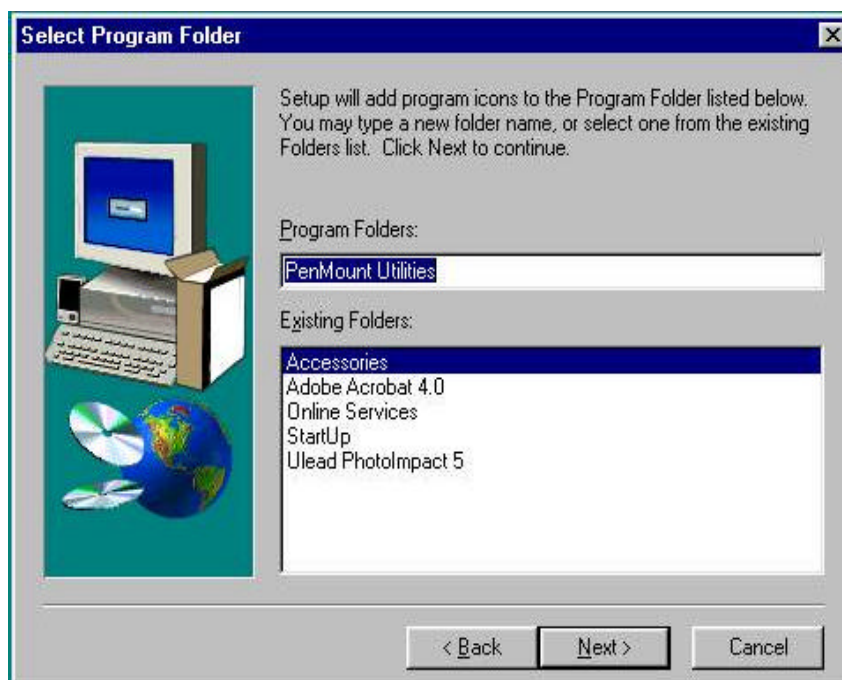
5. The next screens are "Information" , select "Next".



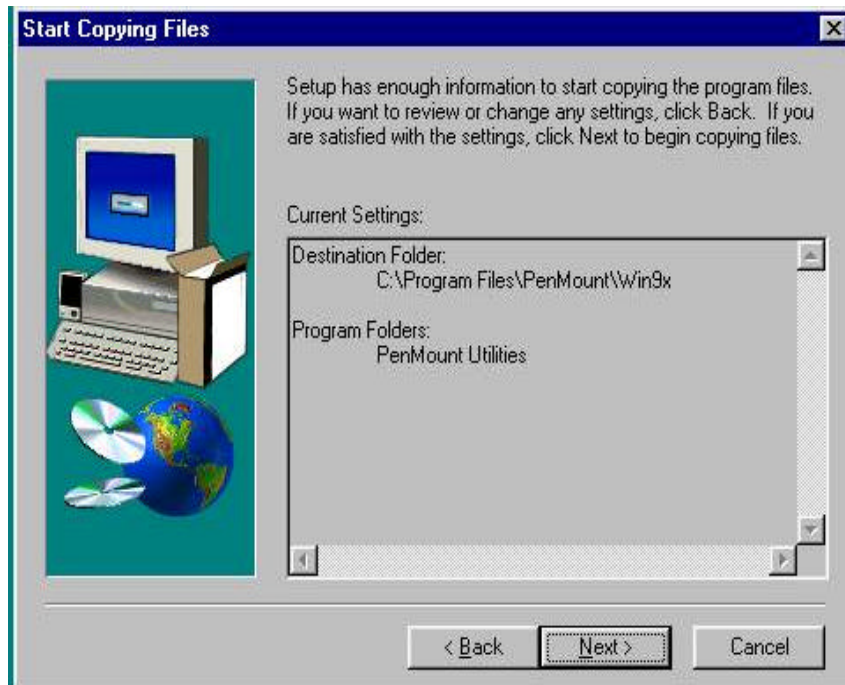
6. The next screen is "Choose Destination Location". It is for Setup installing PenMount Utilities in the folder: C:\Program Files\PenMount\Win9x, select "Next" or modify the folder name you like to use.



7. The next screen is "Select Program Folder", the default is set at "PenMount Utilities", select "Next" or change it.



8. The screen is showing "Start Copying Files", select "Next" for starting copy files to system.



9. The screen is show, "Setup Complete", select "Finish".



10. The screen now is| “Restarting Windows”, select “Yes I want to restart my computer now”, and “OK”





## ***PenMount Windows 98/Me Driver Functions***

### **A. PenMount Control Panel**

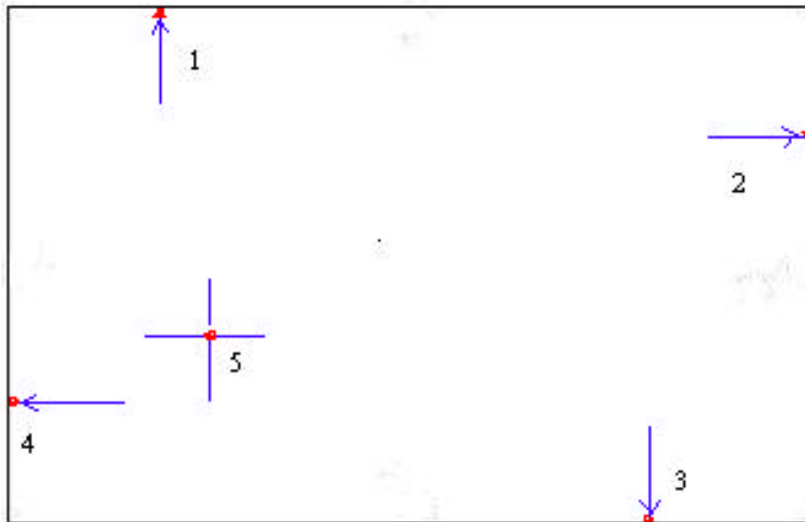
#### **Calibrate:**

After completing PenMount DMC9000 Driver installation, please follow up below procedures to carry out calibration, PenMount offers several ways for calibration your touch screen. The standard way is using 'Standard Calibration' to adjust the touch screen. The more advanced way is for decorating the aged touch screen to perform normally by using 4, 9, 16 or 25 points 'Advanced Calibration' function.

#### **Standard Calibration:**

Standard Calibration is designed for normal usage. After starting Standard Calibration, you may find arrow signals. Please touch with finger or stylus on the red points by clockwise turn when the arrow signals showed. Standard Calibration is completed after the 5th red point. If you want to skip the calibration, please press 'ESC' key.





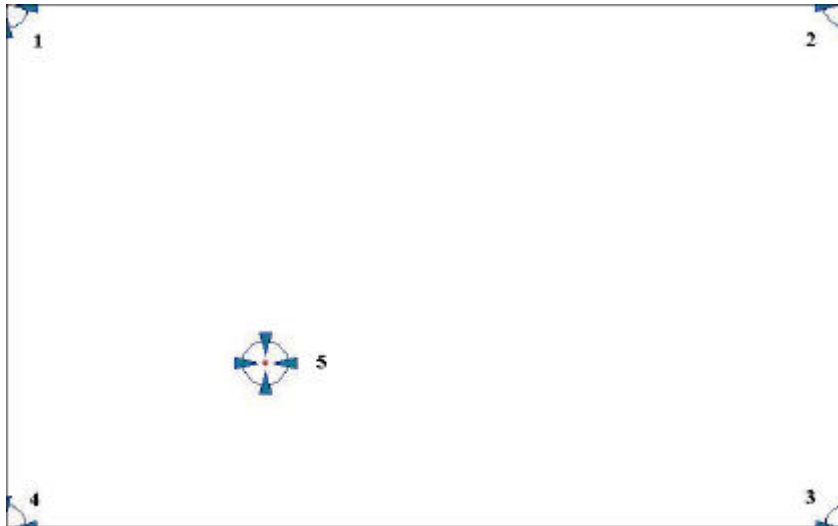
### **Advanced Calibration:**

Advanced Calibration is particularly for more accuracy of touch panel, by using our Advanced Calibration function, 4, 9, 16 or 25 calibration points, the touch panel linearity will be performed very well even the touch screen was aged. When you start the Advanced Calibration, you may find animated calibration points. Please hit the red points with a stylus one by one. The Advanced Calibration is complete after you touch the last red point. If you want to skip it during doing the calibration, please press 'ESC' key

It is suggested to use a stylus during Advanced Calibration to maintain high degree of accuracy.



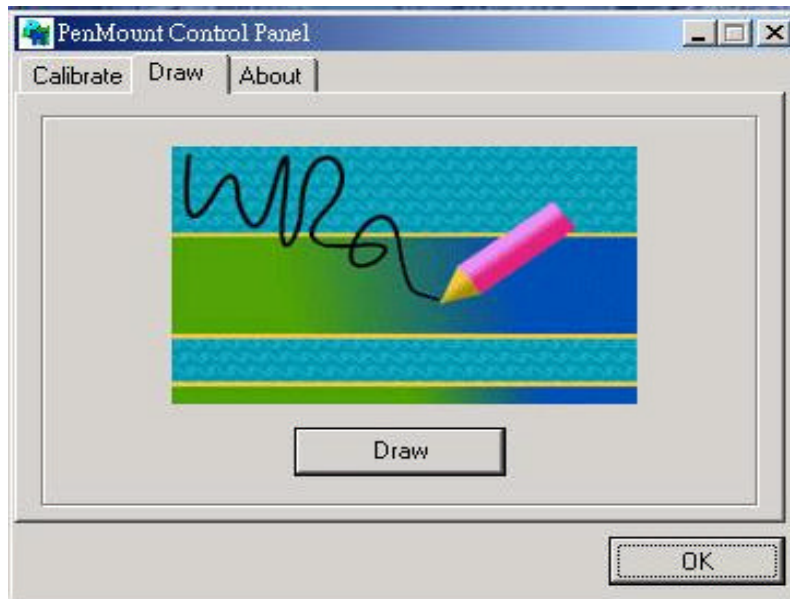


**Plot Calibration Data:**

When you tick this function, touch panel linearity comparison picture occurs after finishing Advanced Calibration. Blue lines means touch panel linearity and black shares are for comparison.

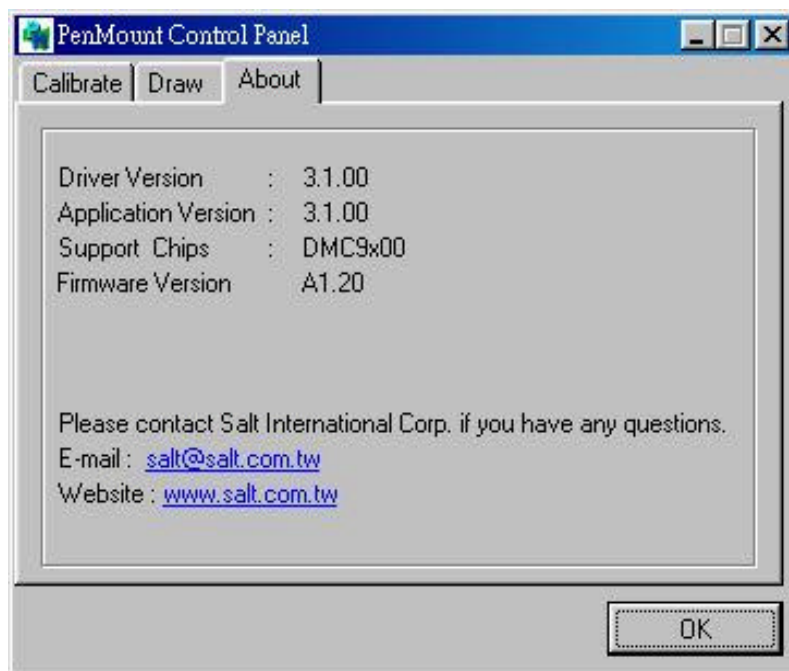
**Draw**

Test or demonstrate PenMount touch screen operation, also the touch location is shown on the display, touch “DRAW” to start



**About:**

It shows information about PenMount controller and this driver



## **B. PenMount monitor**

The PenMount monitor icon is shown in the menu bar of Windows 98/Me system when turn on PenMount Monitor from PenMount Utilities. There are several functions on PenMount monitor :



### **✎Right Click Button:**

When select this function, there is a mouse icon shown in the right-bottom place of screen. It shows 'Left Button' being as default for normal use, touch this mouse icon to change the next touch to be 'Right Button' function. After one touch, the mouse icon will change to 'Left Button' automatically. If user needs to use right button again, user has to touch the mouse icon again for changing the button function.

### **✎Beep**

Turn on or off beep sound.

### **✎Enable PNP**

This function can be turn on/off "PNP" , When it is unmarked (turn off PNP) , the RS-232 transfer signal will be continuous when user continuity between unplug and plug the cable to serial port.

### **✎Exit:**

Close the PenMount Monitor function.

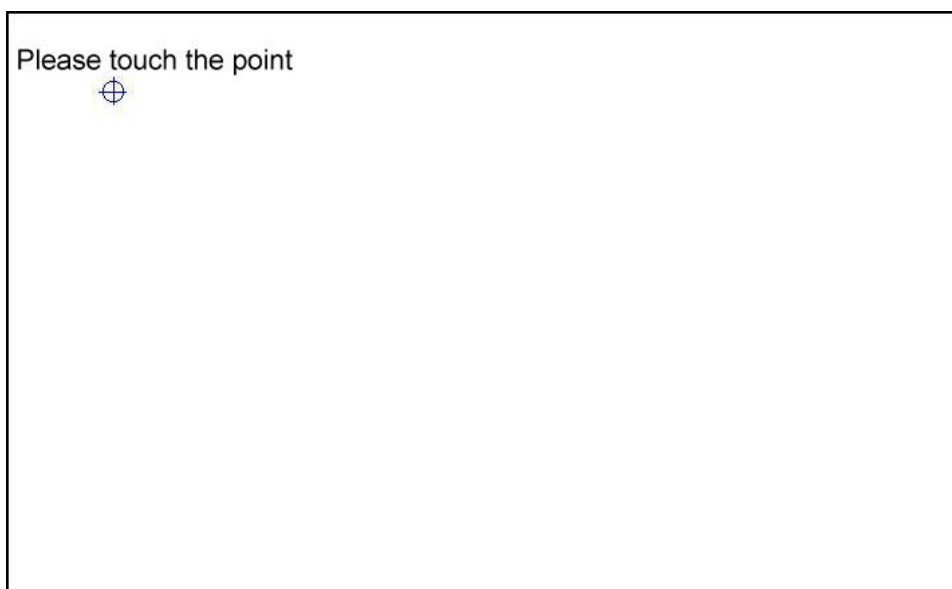
### **C. PenMount Rotating Functions:**

PenMount driver for Windows 98-Me supports several rotating software such as

- Portrait's Pivot Screen Rotation Software
- ATI Display Driver Rotate Function
- nVidia Display Driver Rotate Function
- SMI Display Driver Rotate Function
- Intel 845G/GE Display Driver Rotate Function

#### **How to operate the rotate function:**

1. Install the rotate software first.
2. Chose the rotate function, and then you will see the calibration point, please touch that point, and cursor will map the rotation itself.



#### **How to uninstall PenMount Windows 98/Me driver**

Before you uninstall PenMount Windows 98/Me driver, please 'EXIT' 'PenMount Monitor' that is in menu bar first.

From 'PenMount Utilities' of 'Programs', select 'Uninstall' utility, computer will ask you "are you sure you want to completely remove 'PenMount Utilities' and all its components"? Select 'Yes' to remove PenMount Windows98/Me driver.